

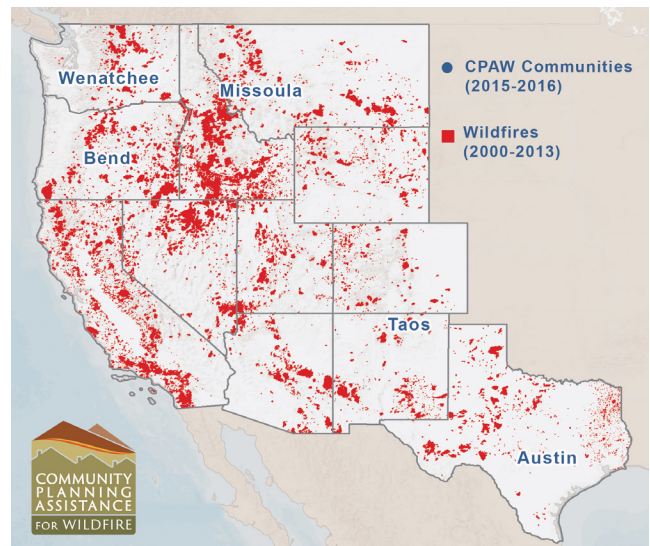
Community Planning Assistance for Wildfire (CPAW)

The Community Planning Assistance for Wildfire (CPAW) program works with communities to reduce wildfire risks through improved land use planning. CPAW provides communities with professional consulting services in the form of foresters, land use planners, and wildfire risk modelers, to integrate wildfire mitigation measures into the development planning process.

CPAW Communities

In 2015, the CPAW program officially launched with five communities:

- Austin, Texas
- Bend, Oregon
- Missoula, Montana
- Taos, New Mexico
- Wenatchee, Washington



Planning for Fire Adapted Communities

CPAW provides communities with additional technical assistance to reduce wildfire risk, such as:

- Landscaping regulations to manage hazardous vegetation in wildfire-prone areas;
- Development and design standards for minimum set of development requirements as a pre-condition to approval;
- Wildfire hazard overlay zones that require uniform compliance with wildfire mitigation standards in areas at high risk to wildfire;
- Growth management policies and incentives, such as a transfer of development rights program, to encourage future development away from high wildfire risk areas;
- Comprehensive Plans that include policy language to empower communities with the ability to re-direct or re-design development based on wildfire risk;
- Subdivision design standards to ensure minimum road widths, turnarounds, secondary access, and maximum grades;
- Wildfire risk mapping to identify values at risk, prioritize fuel treatments and inform future land use decisions.

CPAW links planning policies with other efforts, such as **Firewise Communities**, **Community Wildfire Protection Plans**, and **Multi Hazard Mitigation Plans**. Participation in the program is voluntary and requested by local governments.

CPAW is a partnership between Headwaters Economics and Wildfire Planning International. It is funded through a cooperative agreement with the U.S. Forest Service and private foundations.



Wildfire Planning International

Wildfire Planning International
Molly Mowery, President
www.wildfireplanning.com
molly@wildfireplanning.com | 303-358-9589



Headwaters Economics
Kimiko Barrett, PhD
<http://headwaterseconomics.org>
kimi@headwaterseconomics.org | 406-224-1837

Helping communities better plan the wildland-urban interface.