

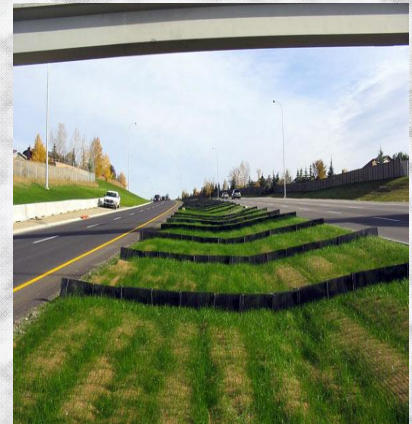
EROSION AND SEDIMENT CONTROL MANAGEMENT

DOES YOUR PROJECT FALL UNDER THE NEW
CONSTRUCTION
STORMWATER GENERAL PERMIT?



Do you need to install and maintain erosion and sediment controls?

Do you know that there are new minimum technical requirements for stormwater management at new development sites?



Training is available on these new requirements through:

Department of Ecology

<http://www.ecy.wa.gov/programs/wq/stormwater/index.html>

Phone: (509) 575-2490

AGC Education Foundation

<http://www.constructionfoundation.org>

Phone: (206) 284-0061

University of Washington-Engineering Professional Programs

<http://www.engr.washington.edu/epp/esa/index.html>

Building Industry Association of Washington

<http://www.biaw.com>

Phone: 1-800-228-4229

INFORMATION CAN ALSO BE FOUND IN:

- *Eastern WA Phase II Municipal Stormwater Permit-Appendix 1*
- *Stormwater Management Manual for Eastern Washington-Chapter 7*